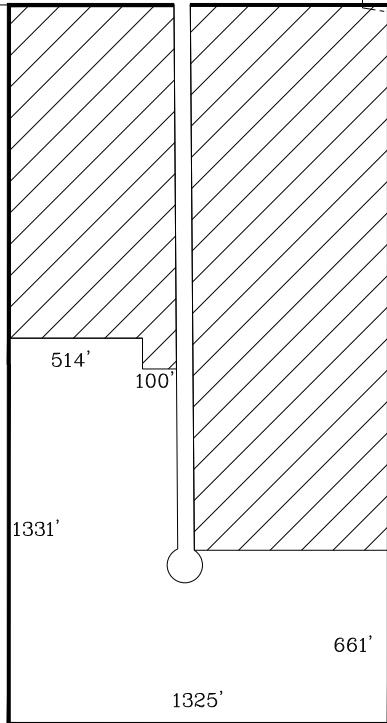
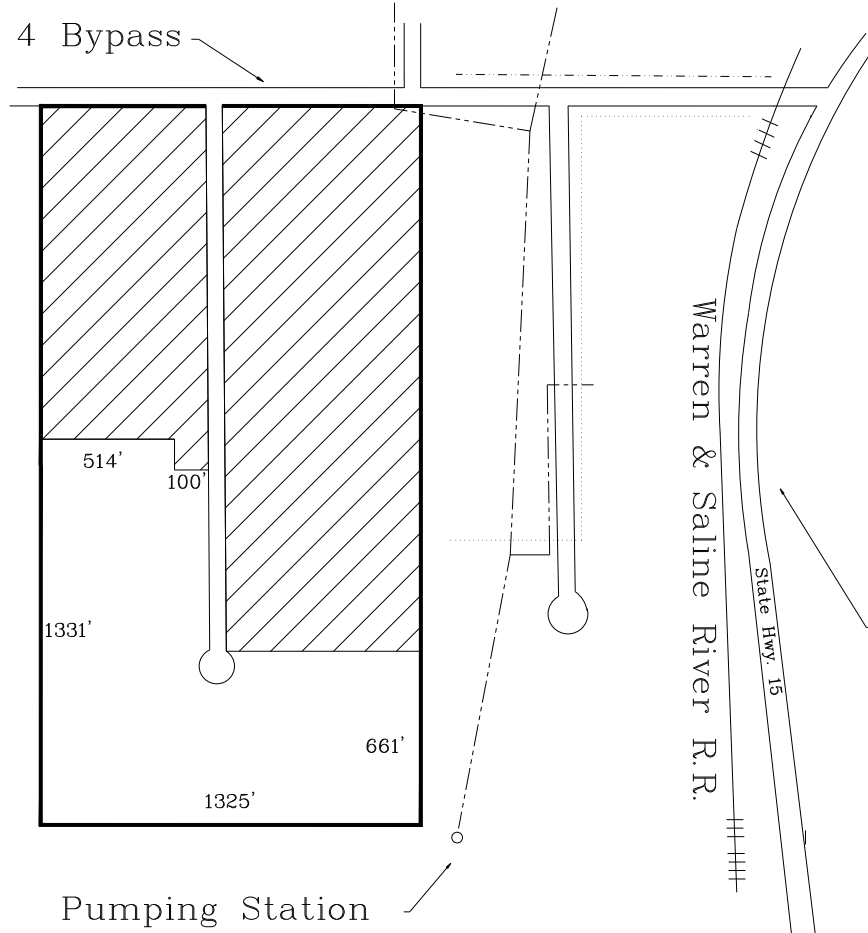


State Highway 4 Bypass



Pumping Station

Warren & Saline River R.R.

State Hwy. 15

State Highway 15



not to scale

29 Acres

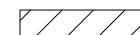
Note: This drawing was prepared by the Arkansas Economic Development Commission from information deemed reliable. Verification is recommended prior to lease or purchase.

— Site Boundary

- - - 4" Gas Line

..... 8" Water Line

- - - 8" Sewer Line

 Sold Property

For further information contact:
 Arkansas Economic Development Commission
 One Capitol Mall
 Little Rock, Arkansas 72201
 [501]-682-7311

Industrial Site WARR001

Warren , Arkansas

