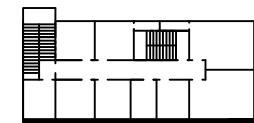
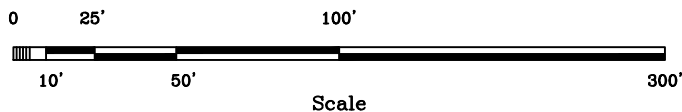


- A 12'1" under ceiling
- B 18'1" under ceiling
- C 21'8" under beam
- D 25' between beams
- E 24' under beam
- F 27'6" between beams



Office Second Floor

For further information contact:
 Arkansas Economic Development Commission
 (501)-682-7311



Note: This drawing was prepared by the Arkansas Economic Development Commission from information deemed reliable. Verification is recommended prior to lease or purchase.